

Walking and Biking in Ballwin

- E1 Ballwin Elementary School
- E2 Westridge Elementary School
- E3 Woerther Elementary School
- E4 Henry Elementary School
- E5 Claymont Elementary School
- E6 Selvidge Middle School

- P1 Viasis Park
- P2 Holloway Park / North Pointe Aquatic Center
- P3 The Pointe
- P4 New Ballwin Park
- P5 Ferris Park
- P6 Queeny Park
- P7 Castlewood State Park
- P8 Bluebird Park

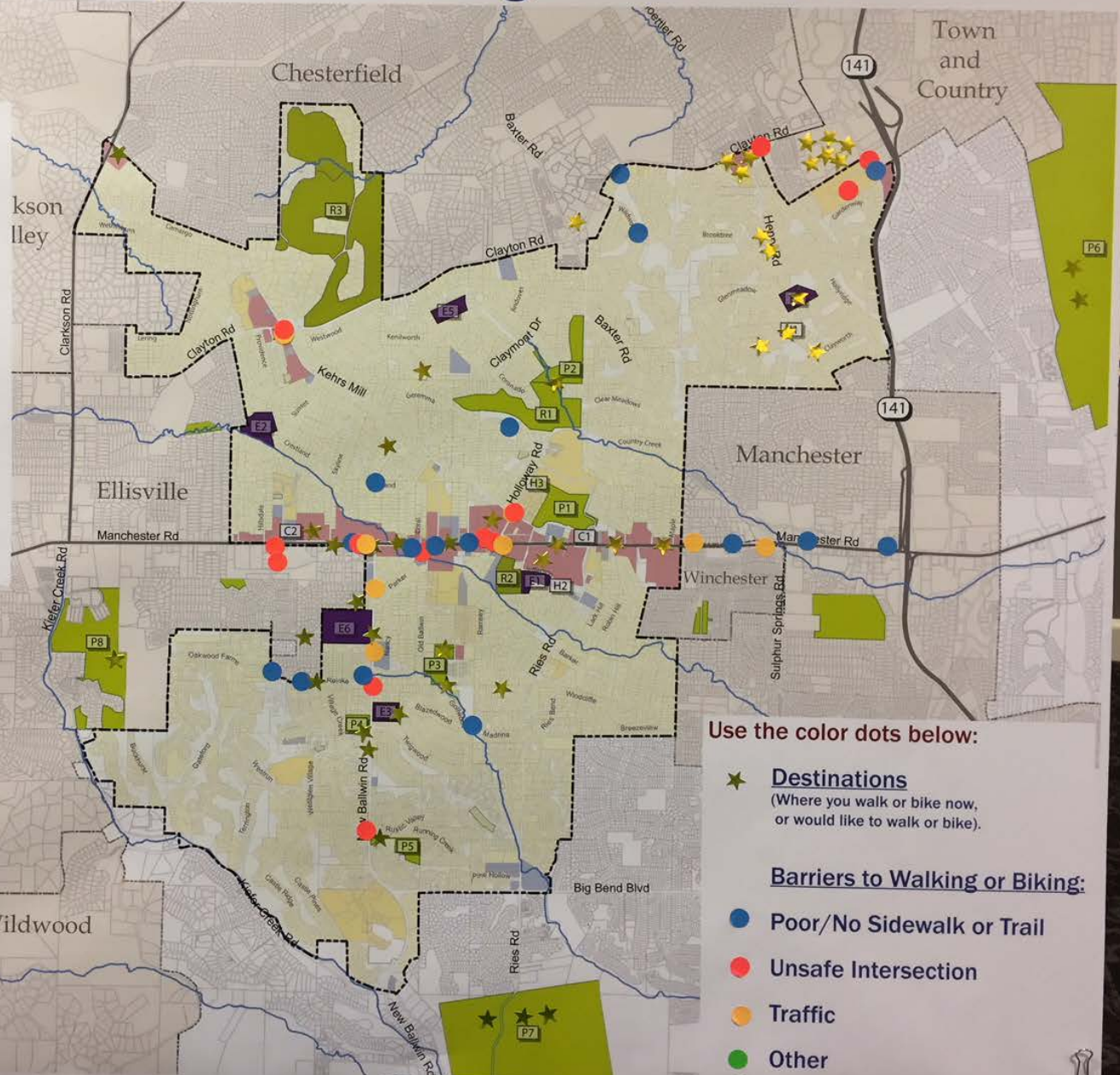
- R1 Ballwin Golf Course
- R2 Ballwin Athletic Association
- R3 Meadowbrook Country Club

- H1 Bacon Log Cabin
- H2 Old Ballwin Schoolhouse
- H3 Harrison Schmidt Dahike Log House

- C1 Ballwin Government Center
- C2 Ballwin Post Office



0 1/2 Mile 1 Mile



Use the color dots below:

- ★ **Destinations**
(Where you walk or bike now, or would like to walk or bike).

Barriers to Walking or Biking:

- Poor/No Sidewalk or Trail
- Unsafe Intersection
- Traffic
- Other



